

About Alliedstar

As a trusted partner for dental professionals, Alliedstar strives to deliver intuitive and reliable digital solutions by advancing technology around clinical demands. We empower dental enthusiasts to level up patient care and achieve excellence in their everyday practice.



Headquarters

Room 138, Building C
No. 2305, Zuchongzhi Road
Pudong, Shanghai, China
201203



Sales Inquiry

sales@allied-star.com



Alliedstar



AS 260 Intraoral Scanner

A choice of value that stays uncompromised
on all the desirable qualities.

Brand New Design

With a modern and sleek design, AS 260 is imagined with a mindset that centers around the users.

- **Super Light Weight**

As light as 175g, AS 260 is all for burden-free practice.

- **Detachable Cable**

Easily replaceable, reducing costs on maintenance and repair.

- **Streamlined Design**

Ergonomically engineered to deliver a modern feel and comfort in use.



Scanning Elevated

A flagship model designed to scan like never before, with a full upgrade in speed, depth of field and many other features.

Exclusive Algorithms

Scanning is elevated to new levels where instant imaging comes with a speedy smoothness, due to AS 260's computational power.



High-resolution Image

Optimized optical structure brings better data quality, with a True Color mode delivering detailed impressions while ensuring precision and accuracy.

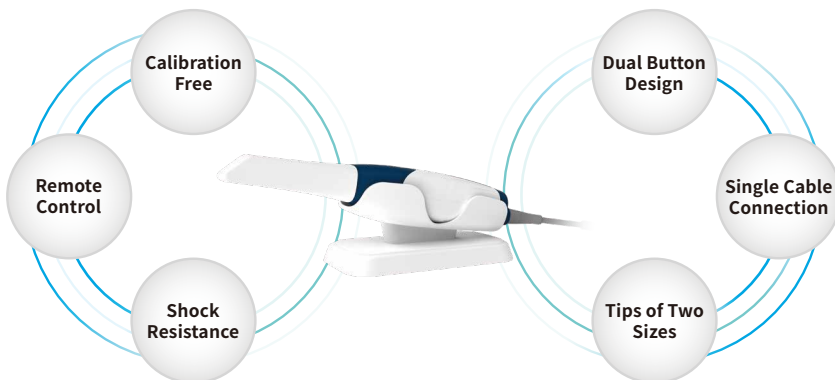


Greater Depth of Field

AS 260's greater depth of field equips the device with better capacities to capture clinically difficult areas such as inlays and implants.

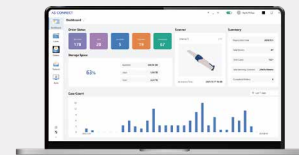


A Signature Experience




AS Connect


Your one-stop gateway to digital dentistry.

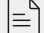



 Intuitive Dashboard

 Data Synchronization

 Web Viewer & 3D Data Display

 Open Digital Ecosystem

 Case & Patient Management

 Cloud Storage Space